

## The Haymarket Building

Dublin, IE

Unity Full Height SGL Shower Cubicles,  
Unity Full Height HPL Toilet Cubicles,  
SGL Model Z Active Bench Lockers.

### The project.

The Haymarket Building is a unique 6-story, new-build office development in Dublin finished to exceptionally high standards. The modern office building, which has a distinctive square structure, has been designed to seamlessly integrate within Smithfield Plaza and its surrounding streets.

### The challenge.

At The Haymarket Building, practicality meets excellent design, and Architects Reddy Architecture + Urbanism have created a sophisticated space that the tenants can be proud of.

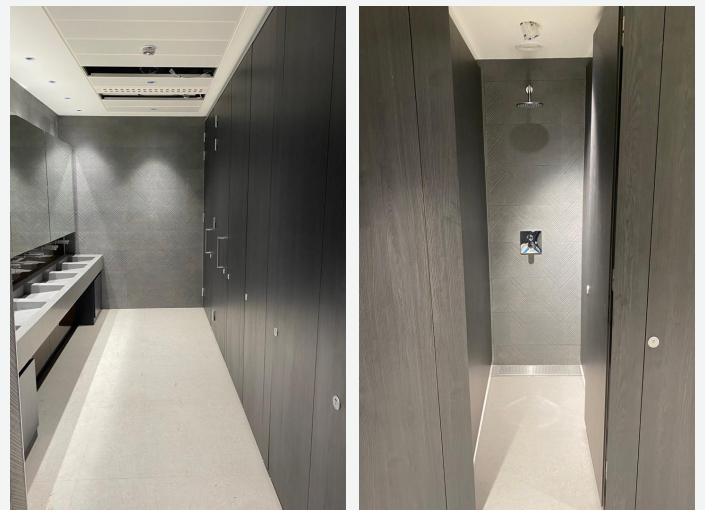
Venesta accredited installer Crofton Interiors were appointed to complete the installation of the washroom facilities for the entire building. This included male and female toilets on each level and shower and changing facilities at basement level.

### The solution.

With the world embracing a hybrid work-life balance there is a growing trend for building owners and employers to create a home-from-home style when it comes to office space. Especially within city and large town locations, having the ability to mix health and lifestyle activities with work is of increasing importance to people.

Split over two floors, the basement houses a gym and self-contained male and female changing rooms with a separate toilet block on the upper basement level. Venesta's Unity Full Height cubicle range was the product of choice for the designers of this project, due to its versatility.

Unity Full Height provides a simple, striking design with sleek satin anodised aluminium fittings for a stylish finishing touch. Both the toilet and shower cubicles for the changing rooms were specified as Unity Full Height to create a modern and uniformed designed thanks to the cubicles flush-fronted doors.



Unity Full Height SGL shower cubicles were specified for the changing rooms. The full height floor to ceiling cubicles are ideal for creating complete privacy. The doors and panels are manufactured using Solid Grade Laminate (SGL), ensuring the shower cubicles are completely water resistant and hardwearing.

Model Z Active 400mm Bench Lockers were specified for both the male and female changing rooms. The unique Z-shaped locker provides space for storing bags and hanging clothes and has the benches integrated into the locker units saving on floor space for a minimalist room layout. The Model Z Active Lockers come readily constructed for quick, easy installation and are finished in SGL making them hardwearing, impact and scratch resistant.

Additionally, Unity Full Height HPL toilet cubicles, also in Ash Black, were specified throughout the entire building with male and female washroom facilities installed on all 5 floors, each incorporating an oversized accessible Unity toilet cubicle.